

2012 Annual Report & Financial Statements

for the

BLACK MOUNTAIN IRRIGATION DISTRICT



For the Year Ended December 31, 2012

TRUSTEES

Until 2014 Election	Allan Kirschner
Until 2015 Election	Gordon Ivans
Until 2015 Election	Alfred Kempf
Until 2016 Election	Al Horning
Until 2016 Election	Gerry Zimmermann

DISTRICT OFFICERS

Administrator	R. Hrasko, P. Eng.
Operations Superintendent	Kevin Burch



Auditors: Grant Thornton LLP

THE ANNUAL GENERAL MEETING
Will be held in the BMID Boardroom
285 Gray Road, Kelowna, BC
Wednesday, April 10, 2013

Time: 7:00 pm



**BLACK MOUNTAIN IRRIGATION DISTRICT
285 GRAY ROAD, KELOWNA, BC**

**AGENDA – 2012 ANNUAL GENERAL MEETING
APRIL 10th, 2013, 7:00 P.M.**

AGENDA ITEMS

- 1 Call Meeting to Order - Introduction of Trustees and Officers
- 2 Notice of AGM
- 3 Minutes of 2011 AGM
Business Arising from Minutes
- 4 2012 Auditors Report - Presentation by Auditor
Business Arising from Auditors Report
- 5 Appointment of Auditor
- 6 2012 - Trustees Report
Business Arising from Trustees Report
- 7 2012 - Operations Report
Business Arising from Operations Report
- 8 2012 - Water Quality Report
Business Arising from Water Quality Report
- 9 Budget for 2013
- 10 Election and Trustee status for 2013
- 11 Trustees' and Chairman's Remuneration
- 12 New Business / General Discussion
- 13 Meeting Adjournment



2012 Trustees Report to the Water Users

MEETINGS: The Board of Trustees held a total of 25 regular meetings in 2012 to the conduct the business of the District. In addition to the regular scheduled meetings, the Trustees also attended Kelowna Joint Water Committee functions, the Water Supply Association Spring Workshop and October AGM, Kelowna Integrated Water Supply Plan meetings, plus other business functions during the year.

ELECTIONS: There was no election for Trustees in 2011 as both Gordon Ivans and Alfred Kempf were re-elected by acclamation for a three year term.

STAFFING: There were minimal staff changes in 2012. BMID hired one additional outside staff member in Jeff Clark. The management team for BMID for 2012 remains intact for the upcoming year. It includes:

Bob Hrasko	Administrator
Kevin Burtch	Operations Superintendent
Trena Phillips	Office Manager

SAFETY: There were no major injuries or incidents related to work safety or injury in 2012.

MISSION CREEK: BMID relied on Mission Creek and groundwater wells for the water supply to the domestic customers. Mission Creek provided 93% of all water used by BMID in 2012. Mission Creek flows were well above average for 2012 due very wet weather in June and a high snow pack that went late into the spring season. BMID did not have to access upper watershed storage until the end of July, 2012. Water usage in June, 2012 was at record low levels due to the rainfall in Kelowna.

The excessive moisture in the watershed resulted in exceptionally high runoff flow rates in Mission Creek. In June, 2012, there were four exceptionally high flow events that were above 90 cubic metres per second. This resulted in scouring of creek banks in the upper Mission Creek canyon and silt and sediment slopes sloughing into the creek. The creek channel was extensively damaged and turbidity levels did not go below 2.0 in the lower creek until freeze-up in the late fall. The water treatment plant was forced to run most of the year resulting in higher operating costs. In 2012 a total of 6,644 acre-ft of water were treated in comparison to the five year average of 4,380 acre-feet;

WATERSHED: Water reservoir levels at the end of 2012 were at 33 percent of capacity, or 4,149 acre-feet of the 12,567 acre-feet available. Details are summarized in the 2012 Operations Report. The level of moisture in the watershed was higher than normal and the reservoirs were drawn down slightly more than in 2011.

The Three-Forks gravel pit located at the confluence of Mission Creek and Pearson Creek remained inactive.



There were normal levels of range/cattle activity in the watershed. There were no extreme bacteria or contamination results in the raw water monitoring leading us to believe that sufficient attention was being provided to the management of cattle in the watershed. There were no major fencing or watering stations installed in 2012. Grant monies awarded to BMID by the OBWB for cattle fencing is scheduled for completion in 2013.

WATER SAFETY: There was one Water Quality Advisory called in 2012 between June 29, 2012 and July 12, 2012 that was created by high turbidity levels within the creek (>100 NTU). The water treatment plant was operated continuously and turbidities remained below 1.0 in the system for the remainder of the year. The new chlorinators installed in the water system in the spring of 2011 operated well. BMID must install UV disinfection to be in full compliance with the water treatment objectives of Interior Health.

KJWC The Kelowna Joint Water Committee (KJWC) completed the Kelowna Integrated Water Supply Plan (KIWSP) in 2012. This comprehensive report is the most complete report on water supply and quality throughout Kelowna. The KJWC is in the process of completing the Implementation Plan for the report which will set out the collective Capital Project priorities and the Operating strategies for the five large water utilities in Kelowna. The Implementation Report was completed in the spring of 2013.

The BMID UV project is high on the list of water quality projects in Kelowna that require funding assistance. The \$6,000,000 project, (including transmission mains to the site) is in the rezoning process for land use with the City.

WSABC: The WSABC carried out normal businesses and held their AGM in Nelson on October 18 - 19, 2012.

GROWTH: Growth in BMID was low in 2012 with a slight decrease in CEC revenue when compared to 2011 revenue.

<i>Grade of Land/Connections</i>	<i>Year End 2008</i>	<i>Year End 2009</i>	<i>Year End 2010</i>	<i>Year End 2011</i>	<i>Year End 2012</i>
Grade A Lands (assessment)	4323	4300	4310	4292	4294
Grade C Lands (assessment)	1202	1271	1255	1279	1272
Grade D Lands (dry lands)	2668	2582	2582	2565	2567
Single Family Lots	4993	5006	5143	5186	5221
Total Connections	8120	8202	8298	8358	8380
Total CECs Collected	\$ 376,425	\$ 97,002	\$ 62,616	\$ 121,652	\$ 67,492



PROJECTS

Projects undertaken in 2012 by BMID staff included:

- BMID began work on the upgrading of pumps and electrical service at PRV 1 and PRV 2. The two pressure reducing stations house pumps to provide emergency domestic water supply from the lower pressure zone to the higher service elevations of the District;
- Construction of an eye-wash station was started in the fall of 2012 at the Main Chlorinator building to provide improved safety in conformance with WCB regulations;
- A new large heated Cover-All Building was completed at the WTP site. It provides shelter over the mixing tanks at the Water Treatment Plant;
- 986m of 1050mm steel transmission main (493m of parallel main) were installed from Joe Rich Road from the Underpass at Highway 33 to the BMID gate at the Black Mountain Reservoir property. The work included a rebuild of the existing Joe Rich road including road realignment and retaining walls in key locations. BMID worked with the City roads and parks departments to meet their objectives;
- During the spring, the BMID contractor planted vegetation for the 1050mm transmission main that was installed in 2011 south of Highway 33;
- BMID staff discovered problems with the abandoned dam at Little Trapper Reservoir. The dam had significant seepage running alongside the corroded outlet pipe through the dam. BMID works staff decommissioned and breached the earth berm so that flow would naturally drain through the breached structure. BMID will retain the license on this dam in the event that additional water is required for the Scotty Creek area of BMID;
- Maintenance was carried out on the dam structures in the upper watershed. The Province requires a Dam Safety Review for all of BMID's larger dams that must be completed in 2013;
- In October 2012, preliminary site grading was carried out at the Black Mountain Reservoir and UV disinfection project site. Pre-grading of the transmission main is progressing with detailed designs and approvals being undertaken for works;
- BMID worked with the City on finalizing the land exchange areas along Springfield and Belgo Roads around the BMID works yard. The future property boundaries were surveyed and defined, with legal filing and registration remaining to be done in 2013.

ADMINISTRATION: Taxes and tolls increased in 2012 a nominal amount by approximately 2.5% to cover off inflation and increased operating. Rates were set to match the rate of inflation. In late 2012, the tax and toll rates for 2013 were set with increases of 8%. The rate increases covers off the financing cost projected for the UV disinfection project that BMID is facing in the next two years;



ACKNOWLEDGEMENTS:

The Trustees and the Administrator acknowledge the continued co-operation, dedication and hard work of the BMID Staff in the past year and look forward to working with them to serve the ratepayers of the District for the upcoming year.

Respectfully submitted,

Board of Trustees Gordon Ivans – Chair
 Alfred Kempf - Trustee
 Allan Kirschner - Trustee
 Al Horning - Trustee
 Gerry Zimmermann – Trustee

Administrator Robert Hrasco



2012 Water Treatment Plant Report

1.0 WTP OPERATIONS

The Black Mountain Irrigation District's Class IV Water Treatment Plant performed well during the freshet of 2012. Good results were achieved in the reduction of colour, turbidity, total organic carbon levels and particle counts. During the past year, the treatment process improved drinking water quality and good results were obtained, however, during the 2012 treatment season it was necessary to run the plant for an extended period of time because of high raw water turbidity levels in Mission Creek which lasted until the end of November.

Figure 1.1 BMID Water Treatment Plant (note new Guard-All Building)



Turbidity spike occurrences in Mission Creek were common as in previous years, although the spring freshet produced significantly higher than normal flows. The high flows in Mission Creek created increased erosion and higher turbidity levels through the year.

The Water Treatment Plant was able to maintain turbidity levels below 1.0 NTU at the point of disinfection for most of the season; however, there were several large rainfall events and snowmelt in the watershed in late June that resulted in elevated turbidity levels. The peak raw water turbidity in the Grit Pond was 20.7 NTU, prior to entering the treatment process which led to diminished treated water quality. The Water Treatment Plant greatly reduced turbidity levels although turbidity at Booster #1 did rise above 1.0 NTU for a period of time. A Water Quality Advisory had to be issued from June 29 to July 12 until raw water quality increased. The highest turbidity noted at the point of disinfection was 2.38 which occurred on July 12, 2012. However, the plant was able maintain acceptable water quality conditions, with turbidity levels below 1.0 NTU, for the rest of the treatment season.

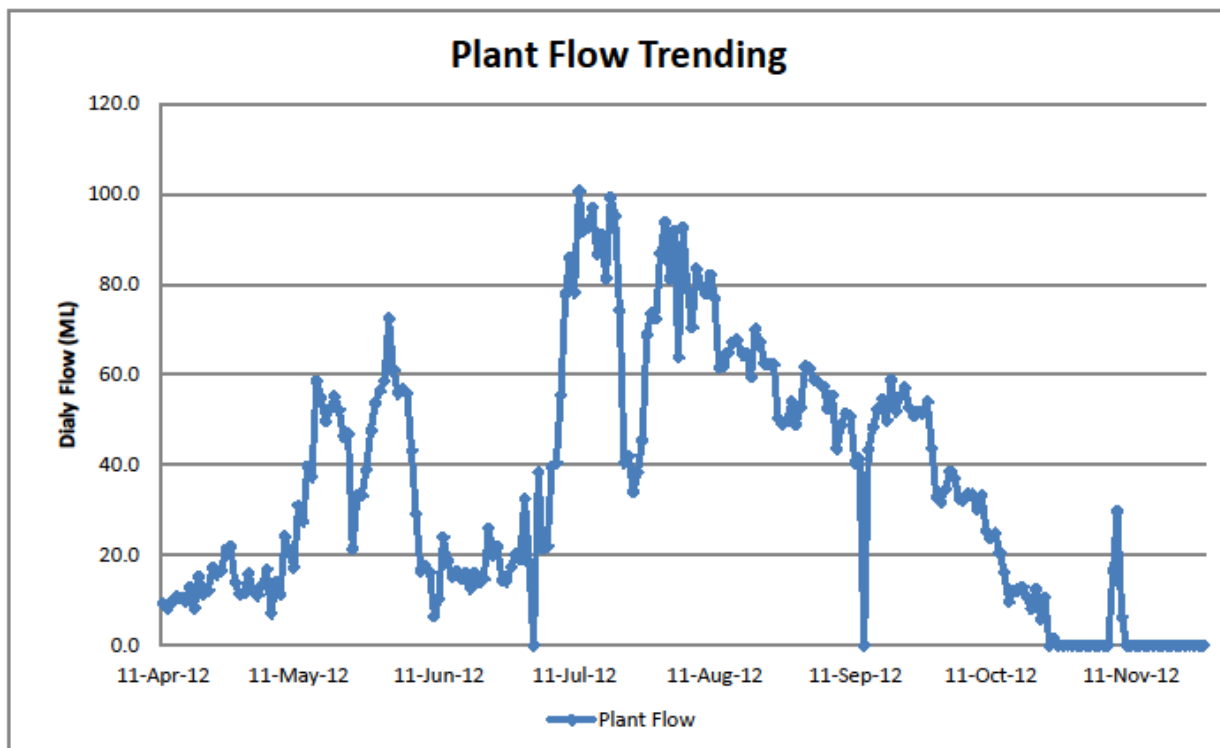


2.0 PLANT FLOW

Peak flows in July reached over 1,480 L/s or 100 ML/day. The maximum daily demand was recorded on July 12, 2012 at 100.7 ML. During 2012, 8,193 ML of water was treated comparing to an average of 5,400 ML/year for the preceding five years. Because of the early start for the water treatment plant and very late shut-off dates, the total volume treated was substantially larger than the five year average. The Water Treatment Plant was operated for 231 days in 2012 compared to 121 days for 2011. The Water Treatment Plant was shut down at the end of October when the raw water quality had improved enough to no longer require chemical treatment. The plant was temporarily restarted for two days in November because of elevated raw water turbidity levels.

The new Guard-All building sited over the Water Treatment Plant flocculators assisted in getting the water treatment plant up and running early in 2012. Treated flow for the WTP for 2012 is illustrated in Figure 2.1.

Figure 2.1 - Water Treatment Plant – Daily Flow (ML/day)



Daily plant flow ML for 2012 combined total for both trains.



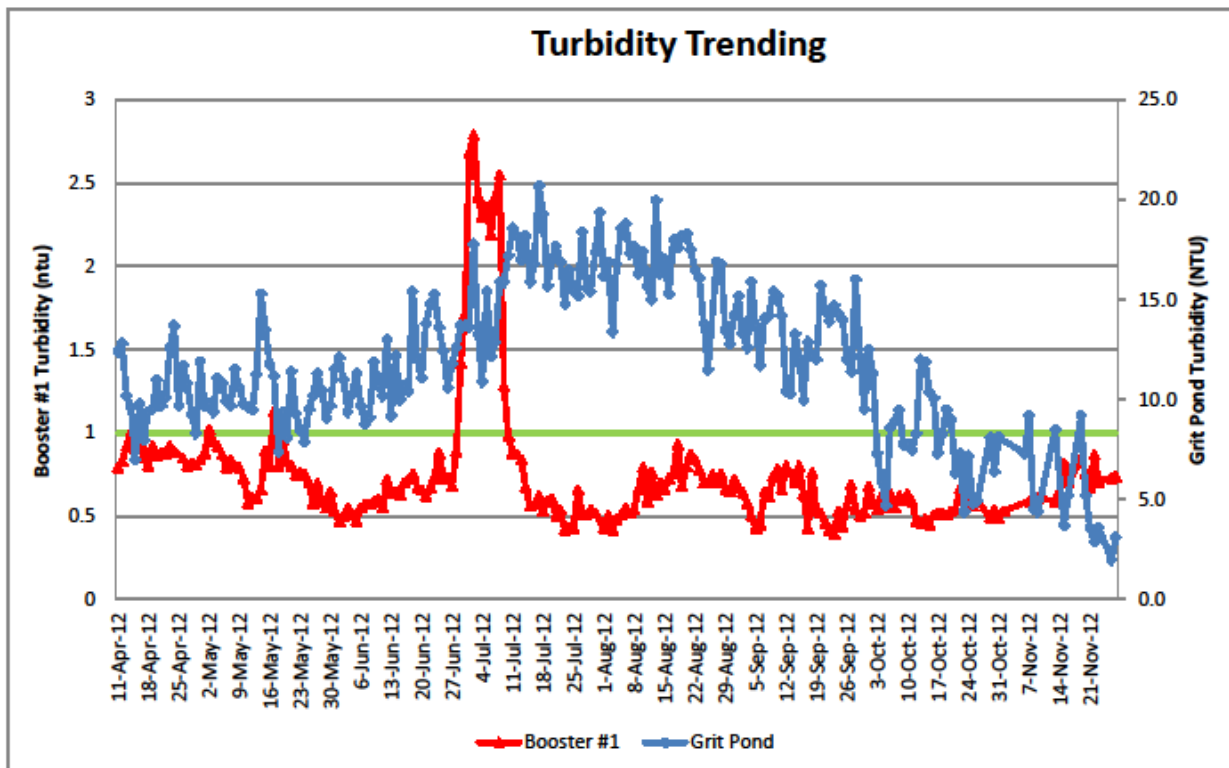
3.0 TURBIDITY

As set by within the Guidelines for Canadian Drinking Water Quality (GCDWQ), the turbidity should be less than 1.0 NTU in the water distribution system at all times. In the early months of 2012, the Water Treatment Plant was able to maintain acceptable turbidity levels although there were brief periods where the systems turbidity rose above the guideline of 1.0 NTU in the transmission mains. June 2012 had several large rainfall/snowmelt events which caused Mission Creek to experience very flows and high turbidities, resulting in a Water Quality Advisory being issued from June 29 to July 12, 2012. The turbidity at the first customer peaked at 2.79 NTU on July 12, 2012.

Average turbidity levels over the treatment period at locations in the water supply system are as follows:

Location	Lab (NTU)	On-line (NTU)
Raw Grit Pond	11.99	
Stevens Reservoir Intake	0.87	
Stevens Reservoir Outlet	0.80	
Hadden Reservoir	0.75	
Screen Works (point of disinfection)	-	0.80
Booster Stn No. 1 (point of first user)	-	0.75

Figure 3.1 - Turbidity Trending - Raw Water & Treated Water (NTU's)

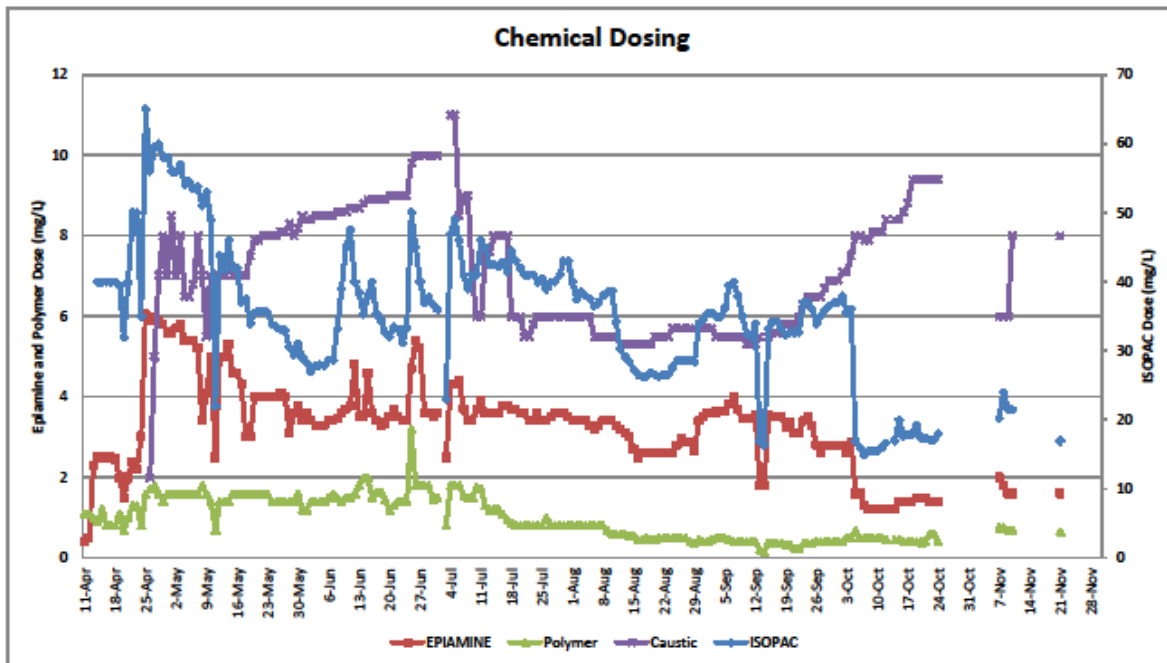


Turbidity trending taken at Grit Pond (raw) and Booster 1 (treated, first customer)

4.0 CHEMICAL DOSING

Figure 4.1 illustrates the dosage trends for the three chemicals used in the WTP coagulation and flocculation process. Included is Caustic Soda, which is used to raise the pH in the water after the flocculation process. The dosage applied generally corresponds to the turbidity and color trends. The more particulate matter and colour in the water that has to be removed, the greater the amount of chemical that will be used. The Streaming Current Monitor equipment in the WTP allows the Operators to optimize the dosages remotely. Optimizing the WTP performance reduces the potential to waste chemical through over dosing. The primary coagulant (Isopac) dosing started high in the freshet reaching 65 mg/L and declined throughout the season reaching a low of 15 mg/L. In addition to Isopac, the coagulant aid (Epiamine) dose ran between a high of 6.1 mg/L and low of 0.4 mg/L. Polymer dosage ranged between 0.15 - 2.7 mg/L.

Figure 4.1 - Chemical Dosing – Average Daily Dose (mg/Litre)



Dosing taken as a combined daily average at two clarifiers.



5.0 MAINTENANCE & UPGRADING WORKS

Maintenance and upgrading work was on-going throughout the year. In 2012, there were several repairs and upgrades that were carried out by District staff and support resources from the water supply industry. These are listed as follows:

- New Guard-All Building was installed over the mixing tanks to aid in both winter operations and early start-up of the Water Treatment Plant, and to protect BMID assets that were exposed to the environment;
- A new temporary sludge holding pond was excavated to assist in sludge removal and storage. Because of the greater volumes of water treated, additional sludge was encountered that had to be stored and dried.
- Additional work was carried out on the computer interface at the WTP. Instrumentation upgrades were carried out by Interior Instrument Tech Services Ltd.

6.0 2013 IMPROVEMENTS AND FURTHER INTO THE FUTURE

Completion of the conversion of the SCADA Human Machine Interface (HMI) Software from the outdated “*Lookout*” software to “*IFIX*” software;

- The purchase of two on-line turbidity meters for the ends of the clarifiers. This will provide the WTP Operators with more timely and accurate monitoring of the treatment process performance. The older outdated Suspended Solids meters have been removed;
- Purchase of a replacement for Steven’s Pond pH probe;
- Construction of permanent sludge holding ponds and drying beds to be located immediately north of the north clarifier;
- Additional railing at the Grit ponds to access all of the stop logs;
- Winterization of flows through the WTP so that, if necessary, the plant can run below the ice year round.

7.0 STAFFING

Two employees normally staff the treatment plant during the spring runoff period. Through the 2012 season, Brian Krause and Skylar Brooks carried out these responsibilities for the entire treatment season. This was an onerous task as each person had to be on-call during their off weekend. Additional support to the WTP staff is being investigated for 2013.

Respectfully submitted,
R. Hrasko
Administrator

Operational Costs

Black Mountain Water Treatment Plant

			2012	2011	2010	2009	2008	2007	2006	2005
441	Chemicals	441.1 Isopac	\$ 176,679	136,441.50	\$ 139,843	124,597	87,318	96,457	110,084	105,000
		441.2 Polymer	\$ 24,883	14,500.00	\$ 1,590	21,300	14,910	14,310	39,234	25,000
		441.3 Caustic soda	\$ 87,899	55,259.25	\$ 13,246	60,619	20,797	47,879	48,050	30,000
		441.4 Sodium Hypochlorite	\$ 3,969		\$ 6,219	8,594	8,173	8,501	16,039	8,000
		441.5 Epiamine Polymer	\$ 48,641		\$ 68,205	69,370	0	0	62,824	65,000
		Total	\$ 342,070	\$ 206,201	\$ 229,103	284,480	131,197	\$206,806	\$297,772	\$233,000
442	Wages	442.1 Wages	\$ 105,033.33	82,057.09	\$ 75,376	66,201	49,068	45,526	78,472	70,000
		Total	\$ 105,033.33	82,057.09	\$ 75,376	66,201	49,068	45,526	78,472	\$70,000
443	Utilities	443.1 Propane	\$ 16,345.14	8,301.54	\$ 10,391	8,989.00	13,259			5,000
		443.2 Electricity	\$ 17,521.08	15,109.21	\$ 14,213	12,428.00	12,881			9,500
		443.3 Telephone	\$ 2,604.62	3,531.96	\$ 3,739	3,203	2,724			2,100
		443.5 Septic Tank	\$ 1,260.00	537.15	\$ 470	1,200	309			1,000
		Total	\$ 37,730.84	27,479.86	\$ 28,813	25,820.00	\$29,490	\$16,669	\$22,481	\$17,600
444	Miscell.	444.1 Clarifier and Sludge Upgds				6,000	27,233			2,000
		444.2 Sludge Removal			\$ 441	18,000	11,511			12,500
		444.3 Laboratory	\$ 855.43	2,236.06	\$ 361	1,900				10,000
		444.4 Instrumentation	\$ 12,756.09	13,129.14	\$ 1,220	500				5,000
		444.5 Cover-All Building	\$ 107,935.14	307,375.88						
		444.6 Engineering				500				2,000
		444.7 Bldg Upgrades	\$ 7,224.57	15,965.31	\$ 11,411	9,234				20,000
		444.8 Other	\$ 8,193.36	1,006.87						
		444.9 Pre-Oxidation								5,600
		Totals	\$ 136,964.59	339,713.26	\$ 13,433	36,134	\$50,384	\$39,115	\$58,954	\$57,100
Year Totals				713,552.18	\$ 346,726	346,434	260,139	308,116	457,679	377,700
Credits			\$ 756.00	58,101.22	\$ 22,852	19226.83	17,198	12,042	17,053	
Total Expenditure			\$ 621,043.23	655,450.96	\$ 323,874	\$346,434	\$242,941	\$296,074	\$440,625	\$377,700

Average over 8 years

Average over 8 years

#DIV/0!

\$ 383,300



2012 Operations and Maintenance Report

MAINTENANCE: To keep the water system operating smoothly, the annual maintenance schedule was followed in 2012. It includes maintenance and upgrades to our PRV stations, booster stations, domestic and irrigation services, and water mains. In 2012, a thorough servicing was completed on the major components of the system. Extensive maintenance is done every year on all major components to maintain operating efficiencies and extend the lifespan of important District infrastructure.

REPAIRS: Small leaks were repaired on a few of the domestic and irrigation services we also had a few main line leaks.

OTHER WORK: Eight (8) new domestic services were installed in addition to the contracted subdivisions. No new blow offs were installed during 2012. There are approximately 40 blow offs yet to be installed on the distribution system. BMID will continue to install blow offs on an ongoing basis. BMID has done more updating to the SCADA (Supervisory Control and Data Acquisition) system to increase efficiency in dealing with station problems. Extensive flushing was done throughout the year. A valve exercising program was completed. Hydrant maintenance was carried out twice during the year. Upstream maintenance this year consisted of brushing and clearing of all dams. Crew replaced two roofs at screen works and chlorinator buildings. BMID worked with Bennett Contracting on installing 42-inch pipeline on Old Joe Rich Rd. As part of this pipe line project we set up a grooving machine to join the pipe for a mechanical seal. BMID set up a Guard-all building at the water treatment plant to cover existing infrastructure as protection from extreme weather conditions. This was started in 2011 and completed in 2012.

TOTAL METERS & CONNECTIONS:

	2011	2012
Total Domestic connections	5277	5341
Total Domestic meters installed to date	855	884
Total Irrigation meters	409	420
<u>Total Commercial metered accts</u>	<u>317</u>	<u>438</u>
Total Metered Accounts	1581	1742
TOTAL ACCOUNTS	6078	7830

EQUIPMENT: Most of the equipment required minor repairs due to normal wear. All equipment was regularly maintained throughout 2012, with some major servicing required. BMID purchased two new pieces of equipment. One single axle dump truck (Kenworth) and a 2012 S750 Bobcat. BMID also had to replace one half-ton pick up truck due to an accident. That truck was replaced with a 2010 Ford F150. BMID also bought two 2011 Ford Rangers.

STAFF: Training of staff has been ongoing to meet the Provincial training requirement of 2.5 days for every two years, per operator. BMID staff provided a high level of day-

to-day performance and worked diligently throughout 2012. Management is very pleased and supportive of the staff's efforts.

CONSUMPTION: Total annual consumption was 11,413.95 ML (3,015,573,600 US Gallons, 9,684 ac-ft). Please refer to consumption graph attached. The average daily flow for 2012 was 31.19 ML/day (823,972 US gallons/day). The maximum daily flow was on August 23rd at 122.87ML (32,459,000 US gallons). The minimum day was 4.84 ML/day on February 24, 2012 (1,183,100 US gallons/day).

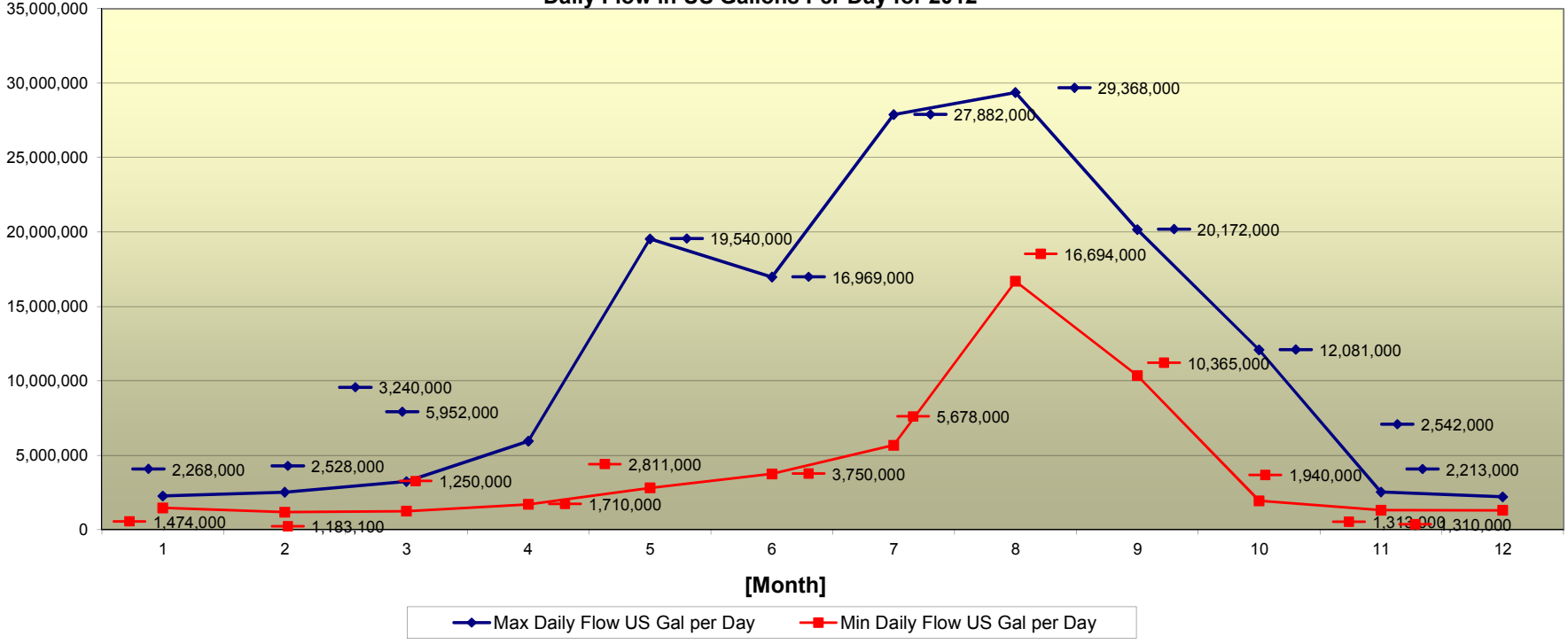
WATERSHED: When the Water Treatment Plant was not running, water was drawn from our higher elevation reservoirs (Graystoke and Fishhawk) to keep water quality as high as possible through the summer months. BMID did not have to utilize water from storage reservoirs until mid July. The reservoir levels at 2012 year-end are summarized below. At year end 32% of storage remained in place.

Reservoir	Volume (full in ac-ft)	Volume (Yr End - ac-ft)	% Remaining
Belgo Reservoir	5,537	2015	36%
Graystoke Reservoir	4,133	655	16%
Fishhawk Reservoir	1,712	418	24%
James Lake Reservoir	1,321	1061	80%
TOTAL	12,712 ac-ft	4149 ac-ft	32%
Loch Long (Province Reservoir)	507	0	0%



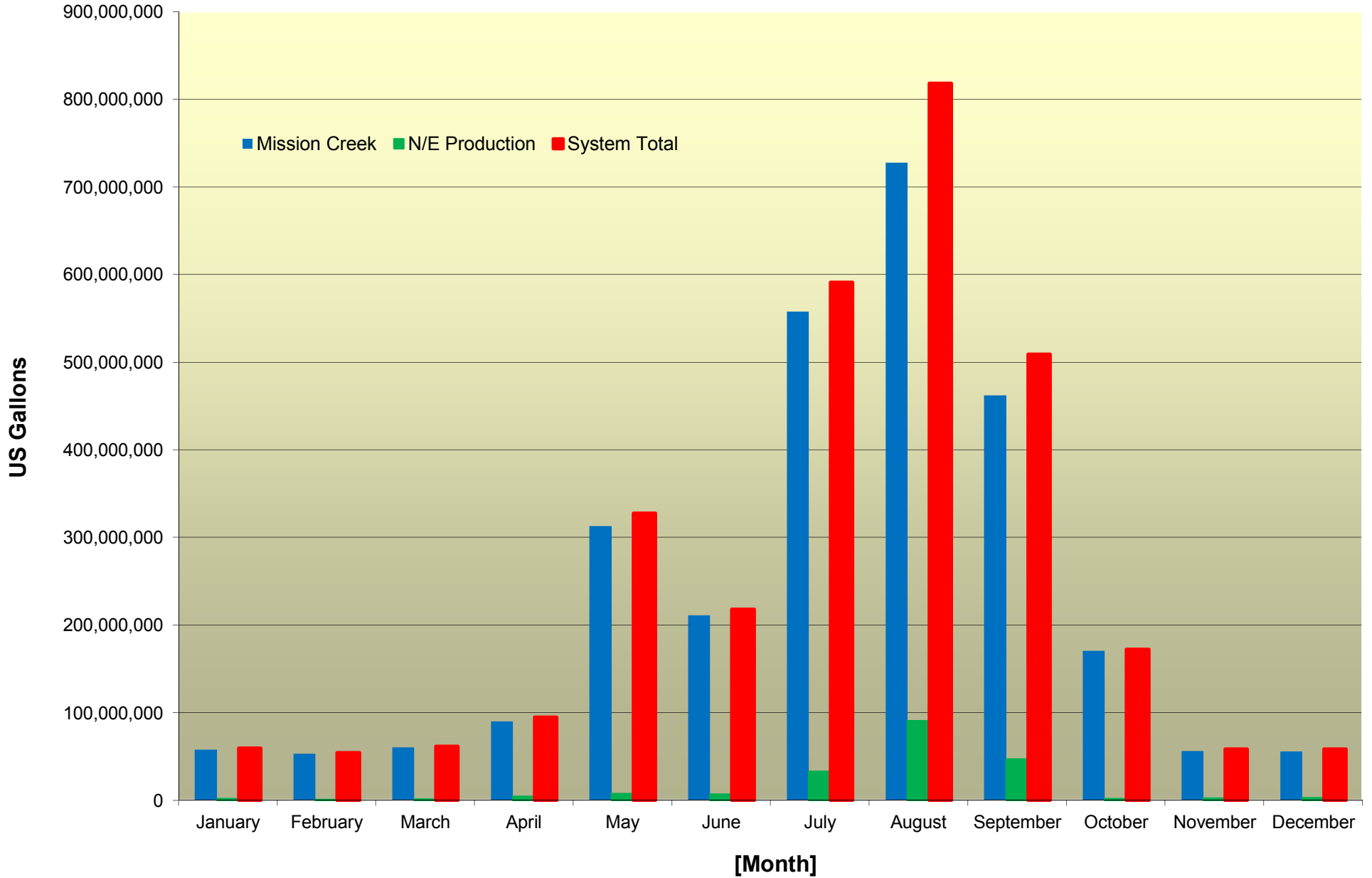
Respectively submitted,
Kevin Burtch
Operations Superintendent

Daily Flow in US Gallons Per Day for 2012

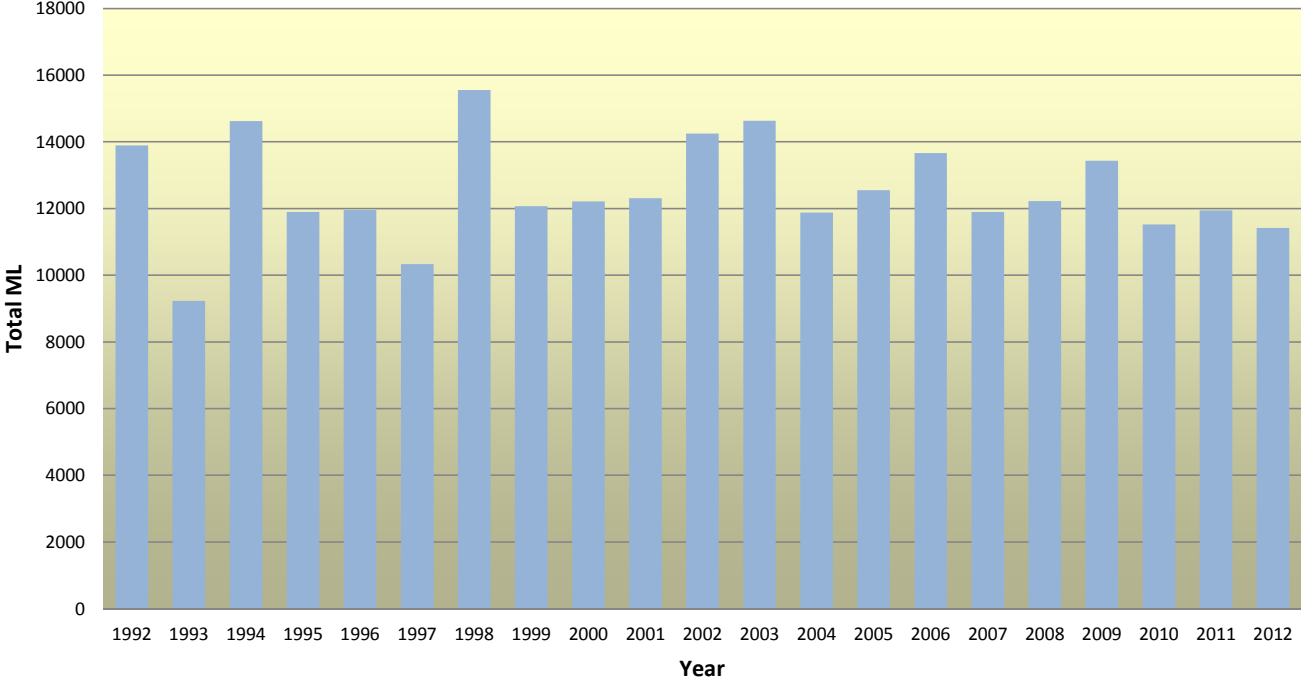


Black Mountain Irrigation District System Water Flow and Usage Monitoring

2012 Consumption Summary



Total BMID Consumption



Black Mountain Irrigation District Provisional Budget Report



GL5220

Date : Apr 08, 2013

Page : 1

Time : 12:25 pm

Account Code : ??-??-??-???

To ??-??-??-???

Fiscal Year : 2013

Account Code	Account Description	2012 Actual Values	2013 Budget Values
1	GENERAL OPERATING FUND		
REVENUES			
1-1-500-500	IRRIGATION TAXES	-406,256	-420,000
1-1-510-510	WATER TOLLS - DOMESTIC & COMMERCIAL	-3,320,658	-3,480,000
1-1-510-511	SALE OF WATER	-9,327	-9,000
1-1-520-520	CONNECTION FEES	-10,900	-7,500
1-1-520-521	TAX & TOLLS INFORMATION	-5,640	-5,500
1-1-530-530	ADMINISTRATION OVERHEAD	-2,771	-3,000
1-1-530-531	LABOUR OVERHEAD	-1,198	-1,000
1-1-530-532	EQUIPMENT RENTAL	-60,870	-70,000
1-1-530-533	HYDRANT MAINTENANCE	-41,123	-41,000
1-1-540-540	SUNDRY REVENUE	-9,494	-10,000
1-1-540-541	PENALTIES & INTEREST	-35,286	-25,000
1-1-540-542	BANK INTEREST EARNED	-484,823	-25,000
1-1-540-543	GAIN/LOSS ON DISPOSAL OF INVESTMENTS	-49,585	0
1-1-540-544	GAIN/LOSS ON DISPOSAL OF CAPITAL ASSETS	7,401	0
1-1-540-549	TURN ON/OFF CHARGES & NEW ACCT FEES	-14,310	-12,000
1-1-540-550	DEVELOPMENT REVIEWS RECLASSIFICATION	-1,000	-1,500
Total REVENUES		-4,445,840	-4,110,500
EXPENSES			
1-2-600-602	TRAINING & EDUCATION	10,946	12,000
1-2-600-604	EMPLOYEE BENEFITS - MISC.	3,532	4,000
1-2-600-606	PUB/SUBSCRIPTIONS & MEMBERSHIPS	1,806	3,000
1-2-600-608	BLUEPRINTING/DUPLICATING SERVICES	0	1,000
1-2-600-609	DIGITAL MAPPING /INFRASTRUCTURE TRACKING	247	1,000
1-2-600-610	CONSULTING SERVICES - GENERAL	61,967	50,000
1-2-600-611	DEVELOPMENT REVIEWS	500	1,500
1-2-600-612	WATERSHED MANAGEMENT	21,387	90,000
1-2-600-614	WATER CONSERVATION / LEAK DETECTION	0	2,500
1-2-600-616	WATER LICENCE FEES	27,522	28,000
1-2-600-618	INSURANCE	116,156	120,000
1-2-600-619	RAILWAY W.LINE CROSSING ANNUAL FEE	788	1,000
1-2-600-620	W. C. B. COSTS	11,797	9,750
1-2-600-622	RADIO LICENSE DISPATCH AIRTIME SAT PHONE	7,263	7,500
1-2-600-624	COMPUTER & OFFICE SUPPLIES	1,452	3,500
1-2-600-626	PROCESS CONTROL - SCADA O&M	24,711	25,000
1-2-600-628	FREIGHT & SHIPPING CHARGES	4,087	3,500
1-2-600-630	UNALLOCATED WAGES - HOLIDAY/SICK PAY	108,920	110,000
1-2-600-632	UNCOLLECTIBLE ITEMS	0	1,000
1-2-600-634	SUSPENSE ACCOUNT - WORK ORDERS	18,838	10,000
1-2-600-636	WELL HEAD PROTECTION - BMID	0	1,500
1-2-600-645	WTP CHEMICALS	341,264	350,000
1-2-600-646	WTP WAGES	105,033	100,000
1-2-600-647	WTP UTILITIES	36,487	32,000
1-2-600-648	WTP MISCELLANEOUS	30,347	31,000
1-2-600-649	WTP STANDBY DUTIES	18,181	15,000

Black Mountain Irrigation District Provisional Budget Report



GL5220

Date : Apr 08, 2013

Page : 2

Time : 12:25 pm

Account Code : ??-??-??-??
 To ??-??-??-??
 Fiscal Year : 2013

Account Code	Account Description	2012	2013
		Actual Values	Budget Values
1-2-600-650	WAGES - SYSTEM OPERATIONS	139,558	140,000
1-2-600-651	SAFETY PROGRAMS	2,654	3,000
1-2-600-652	WATER PATROL DUTIES	0	1,000
1-2-600-653	DOMESTIC METER REPAIRS	0	1,000
1-2-600-654	DOMESTIC SERVICE REPAIRS	45,580	42,000
1-2-600-655	IRRIGATION SERVICE REPAIRS	4,960	10,000
1-2-600-656	WATER MAIN REPAIRS	7,998	35,000
1-2-600-658	METER READING	2,566	3,500
1-2-600-659	IRRIGATION METER REPAIRS	2,097	2,000
1-2-600-660	HANGING TAGS/NOTICES	1,073	1,500
1-2-600-662	WATER QUALITY TESTING	55,032	58,000
1-2-600-664	CROSS CONNECTION CONTROL PROGRAM	9,293	9,500
1-2-600-666	POWER - STATIONS/INTAKE	58,654	115,000
1-2-600-667	TELEPHONE - STATIONS/INTAKE	5,415	5,500
1-2-600-668	STATIONS/INTAKE LABOUR, REPAIRS/PARTS	198,424	180,000
1-2-600-669	HYDRANT REPAIRS	32,008	15,000
1-2-600-670	FLUSHING	14,091	15,000
1-2-600-671	AIR VALVE REPAIRS & MAINTENANCE	10,818	11,000
1-2-600-672	CHLORINE	21,432	25,000
1-2-600-674	UPSTREAM WORKS LABOUR, REPAIRS & EQUIP.	25,746	27,500
1-2-600-676	STANDBY DUTIES	48,603	48,000
1-2-600-679	BC ONE SERVICES	1,221	1,200
1-2-600-680	UTILITY EXPENSES - SHOP	18,896	22,000
1-2-600-682	SHOP SUPPLIES, TOOLS & EQUIPMENT	29,867	25,000
1-2-600-686	BACKHOE, LOADER, FORKLIFT & CAT REPAIRS	3,975	15,000
1-2-600-688	TRUCK MTCE. & REPAIRS	77,361	85,000
1-2-600-691	INTEREST EXPENSE ON 2011 FORD RANGERS	1,080	0
1-2-600-692	EQUIPMENT REPAIRS - MISCELLANEOUS	2,957	5,000
1-2-600-694	GAS & OIL	65,436	65,000
1-2-600-696	SHOP & YARD WORK - MISC.	27,531	27,000
1-2-600-698	GRASS/WEED CUTTING & SNOW REMOVAL	23,445	23,000
1-2-600-702	METER UPGRADES ABSORBED BY BMID	7,133	0
1-2-610-600	SALARIES - OFFICE	168,391	163,000
1-2-610-601	SALARIES - ADMINISTRATION	69,409	75,000
1-2-610-602	TRAINING & EDUCATION	3,799	4,000
1-2-610-604	MEETINGS	5,801	6,000
1-2-610-605	ASSOCIATION/MEMBERSHIP DUES/KJWC	5,785	6,000
1-2-610-609	LEGAL SERVICES & APPRAISAL FEES	5,008	6,000
1-2-610-611	EMPLOYEE BENEFITS - EI & CPP	55,282	58,000
1-2-610-613	EMPLOYEE BENEFITS - MISC.	4,564	5,000
1-2-610-615	B. C. MEDICAL SERVICES PLAN	20,604	21,000
1-2-610-617	EMPLOYEE GROUP INSURANCE PLAN	17,350	20,000
1-2-610-619	EMPLOYEE PENSION	97,383	80,000
1-2-610-620	MPP EMPLOYER PORTION	43,446	45,000
1-2-610-621	EMPLOYEE DENTAL	11,143	14,000
1-2-610-623	EMPLOYEE OPTICAL	1,766	2,000
1-2-610-625	OFFICE SUPPLIES - STATIONARY	10,482	10,000

Black Mountain Irrigation District
Provisional Budget Report



Account Code : ??-??-??-??
 To ??-??-??-??
 Fiscal Year : 2013

Account Code	Account Description	2012	2013
		Actual Values	Budget Values
1-2-610-627	COMPUTER MTCE. & SOFTWARE SUPPORT	17,269	15,000
1-2-610-629	PHOTO COPYING, PRINTER INK & FAX	2,221	2,000
1-2-610-631	ADVERTISING & NEWSLETTERS	1,212	4,000
1-2-610-632	POSTAGE	19,479	20,000
1-2-610-633	OFFICE EQUIPMENT MTCE./RENTAL	1,500	1,500
1-2-610-635	OTHER OFFICE EXPENSE	16,360	12,000
1-2-610-637	AUDIT FEES	37,910	30,000
1-2-610-641	TRUSTEES FEES	59,988	50,000
1-2-610-645	JANITORIAL CLEANING & SUPPLIES	4,500	4,500
1-2-610-646	AMORTIZATION EXPENSE	868,437	850,000
1-2-610-647	OFFICE BUILDING MTCE. & SECURITY	4,748	5,000
1-2-610-649	TELEPHONE, INTERNET, BC ONLINE	7,622	8,000
1-2-610-651	ELECTRICITY & NATURAL GAS	7,957	7,500
1-2-610-653	WATER & SEWER	1,075	1,200
1-2-620-655	INTEREST/BANK SERVICE CHARGES	3,913	3,500
1-2-620-658	RBC LOAN INT & BA FEES	69,608	65,000
1-2-630-657	PURCHASES OF CAPITAL ASSETS	1,933,822	65,125
1-2-630-658	SINKING FUND PAYMENT	0	90,726
1-2-630-659	RESERVE INTEREST ALLOCATION	401,516	150,000
1-2-630-660	PAYMENT OF DEBT	213,000	100,000
1-2-630-661	RBC WTP LOAN PMTS ON PRINCIPAL	0	180,000
1-2-630-663	EQUITY ADJUSTMENT	-65,399	0
Total EXPENSES		6,025,086	4,210,501
Total GENERAL OPERATING FUND		1,579,246	100,001
3 CAPITAL CHARGE RESERVE FUND			
REVENUES			
3-1-540-542	INTEREST EARNED - CCRF	-12,728	0
Total REVENUES		-12,728	0
Total CAPITAL CHARGE RESERVE FUND		-12,728	0
4 SYSTEM RENEWAL RESERVE FUND			
REVENUES			
4-1-540-542	INTEREST EARNED - SRRF	-388,964	0
Total REVENUES		-388,964	0
Total SYSTEM RENEWAL RESERVE FUND		-388,964	0
5 EQUIPMENT REPLACEMENT RESERVE FUND			
REVENUES			
5-1-540-542	INTEREST EARNED - ERRF	-12,552	0
Total REVENUES		-12,552	0
Total EQUIPMENT REPLACEMENT RESERVE FUND		-12,552	0