

# EXISTING HOUSING DISTRIBUTION

|                          |                |
|--------------------------|----------------|
| Single Family/Two Family | 25,074 (62.5%) |
| Multiple Family          | 14,994 (37.5%) |

# PROPOSED ADDITIONAL HOUSING

|                          |        |               |
|--------------------------|--------|---------------|
| Single Family/Two Family | (s.f.) | 12,011 (47%)  |
| Multiple Family          | (m.f.) | 13,528 (53%)  |
|                          |        | 25,539 (100%) |

Conversion to Suites : 1000 Units

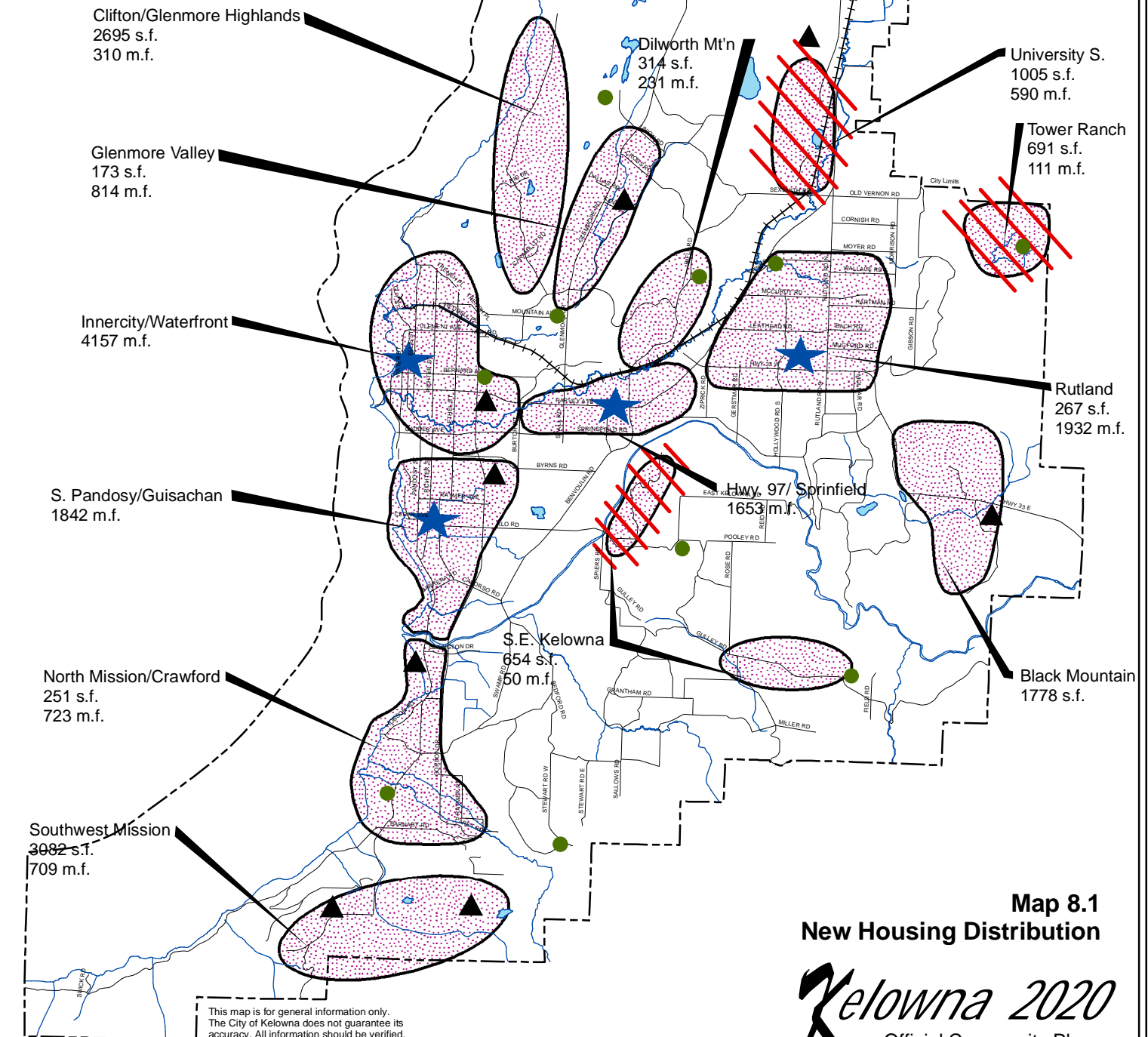
## GROWTH AREAS

## DEVELOPMENT COMMENCEMENT PROJECTED AFTER INITIAL FIVE YEAR PERIOD

## URBAN CENTRES

## VILLAGE CENTRES

## NEIGHBOURHOOD CENTRES



This map is for general information only.  
The City of Kelowna does not guarantee its  
accuracy. All information should be verified.